

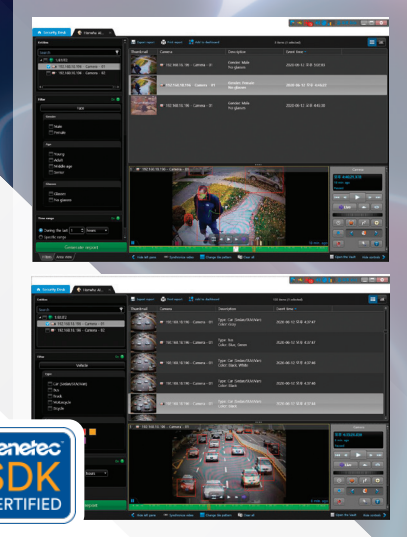


Hanwha Techwin AI Camera Plug-in for Genetec Security Center

Hanwha Techwin's AI Camera Plug-in is used to register AI analytics metadata (people/faces/vehicles/license plates) captured by Wisenet AI cameras to Genetec Security Center.

Searchable Events

- Persons detected with attribute extraction
- Faces detected with attribute extraction
- Vehicles detected with attribute extraction
- Vehicle license plate detected



Compatible with Genetec Security Center 5.9.2.0 or Higher
 Part number = GSC-1SDK-HANWHA-AICam
 Minimum AI camera firmware: 1.41.03

Detected Objects	Attribute Category	Supported Attribute Items
Person	Gender	Female, Male
	Upper garment	(Up to 2 colors simultaneously)
	Lower garment	Black, Gray, White, Red, Orange, Yellow, Green, Blue, Purple
	Bag	Carries a bag, does not carry a bag
Face	Gender	Female, Male
	Age	Young/Adult/Middle/Senior
	Glasses	Wearing glasses, not wearing glasses
	Face mask	Wearing mask, not wearing mask
Vehicle	Type	Car (sedan/SUV/van/etc.), bus, truck, motorcycle, bicycle
	Color	(Up to 2 colors simultaneously) Black, Gray, White, Red, Orange, Yellow, Green, Blue, Purple
License plate	License plate	Presence of a license plate

Compatible Camera Models

Indoor Vandal Dome



PND-A9081RV

Outdoor Vandal Dome



PNV-A9081R

Indoor Flush Mount Dome



PND-A9081RF

Bullet



PNO-A9081R

Box



PNB-A9001



For licensing information, contact your local sales representative.